

LED-Arbeitsscheinwerfer Modell 660 Mk II

Part no. AS-1373-66111

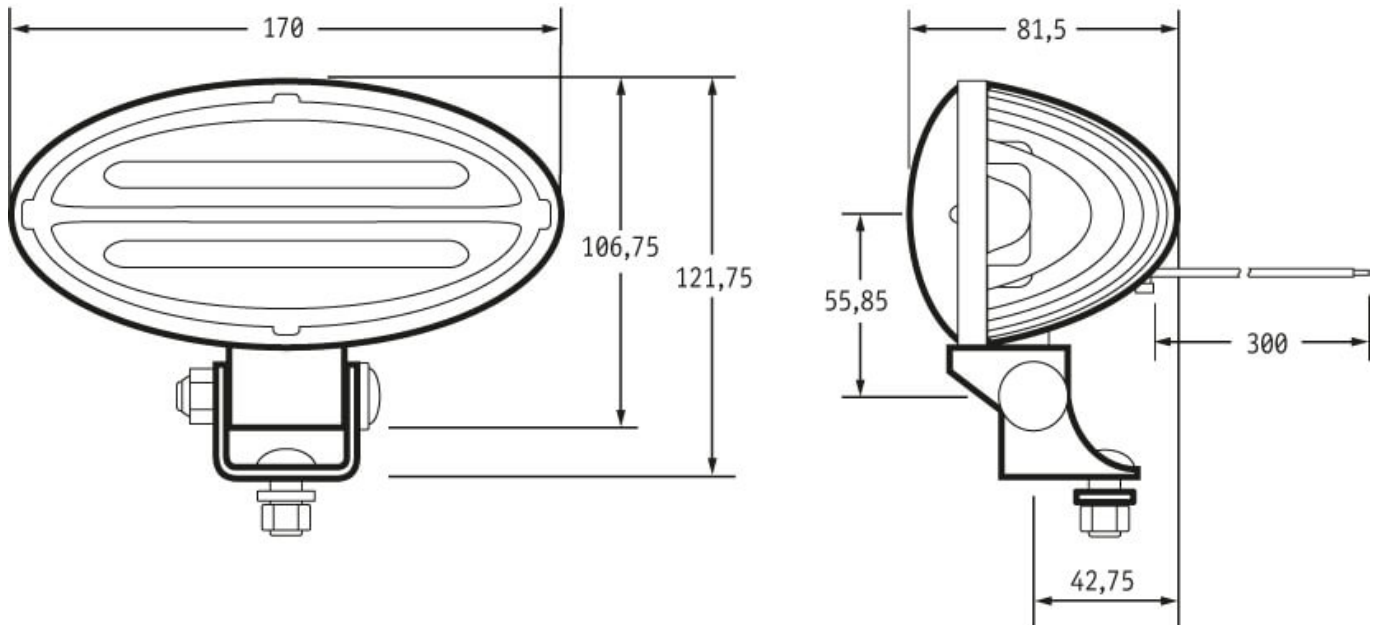


12-24 V (9-24 V), 2200 lm, flood

Specifications

Voltage range (V), nominal	12-24
Voltage range (V), functional	9-28
Power consumption (W)	24
Load capacity	
Temperature range (°C)	-40 bis 65
Brightness	
Brightness (raw lm)	2750
Brightness (effective lm)	2200
Brightness (cd)	
Brightness (lx)	
Performance class	1000 bis 3000 lm eff.
Beam pattern/lens	Geländeausleuchtung
Beam angle [°]	
Colour Temperature (K)	5000
Others	
Ingress protection	IP69K
Resistivity	
Standards	
Electromagnetic Compatibility	
Transient spike protection	150 V @ 1 Hz-100 Pulse

Dimensions



Mounting

Mounting type	Universalhalterung, M8-1,25x20
Installation dimensions/diameter [mm]	
Installation depth [mm]	
Connector	Delphi MP280-2M (12084167), integriert
Mating connector	Delphi MP280-2F (12059183)
Reverse polarity protection	1
Black wire	Masse
Red wire	Arbeitsscheinwerfer

LED-Arbeitsscheinwerfer Modell 660 Mk II

Part no. AS-1373-66111

Others

Material (Housing)	Aluminium
Material (Diffusing lens)	Glas
Color (Housing)	Schwarz
Color (Mount)	Chrom
Color (Diffusing lens)	Klar

Beam pattern

Variants

AS-1373-66111	12-24 V (9-24 V), 2200 lm, Geländeausleuchtung
----------------------	--

Accessories